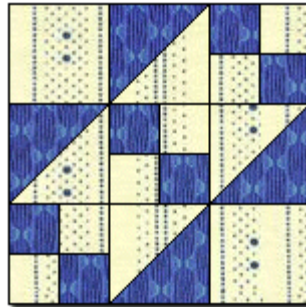
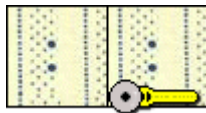


Broken Sugar Bowl

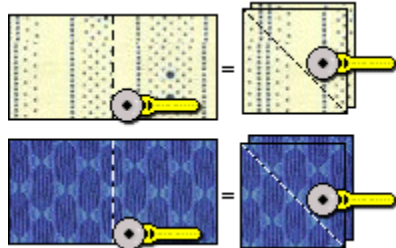
This makes a 12" block,
and is a 1942 version of
this block!



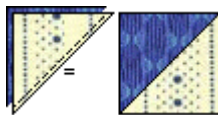
** Preparing the Pieces and Sewing the Block **



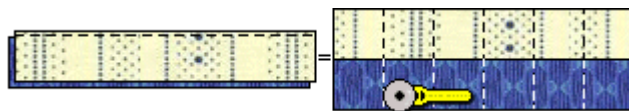
Start by marking and cutting the Color 2 4-1/2" x 9" strip into two 4-1/2" squares...



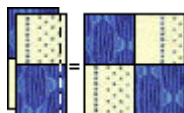
Then mark and cut the Color 1 and Color 2 4-7/8" x 9-3/4" strips into two 4-7/8" squares of each. Stack these squares and cut them on the diagonal to make four Half Square Triangles of each...



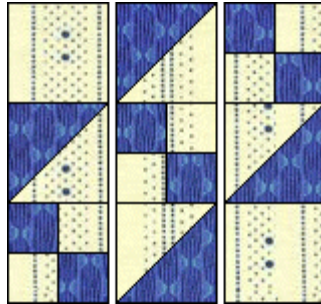
Sew these half square triangles together to make half squares, using a scant 1/4" seam. Press the seam allowance towards the darker fabric. Square this off to be 4- 1/2" if needed. Make four units like this...



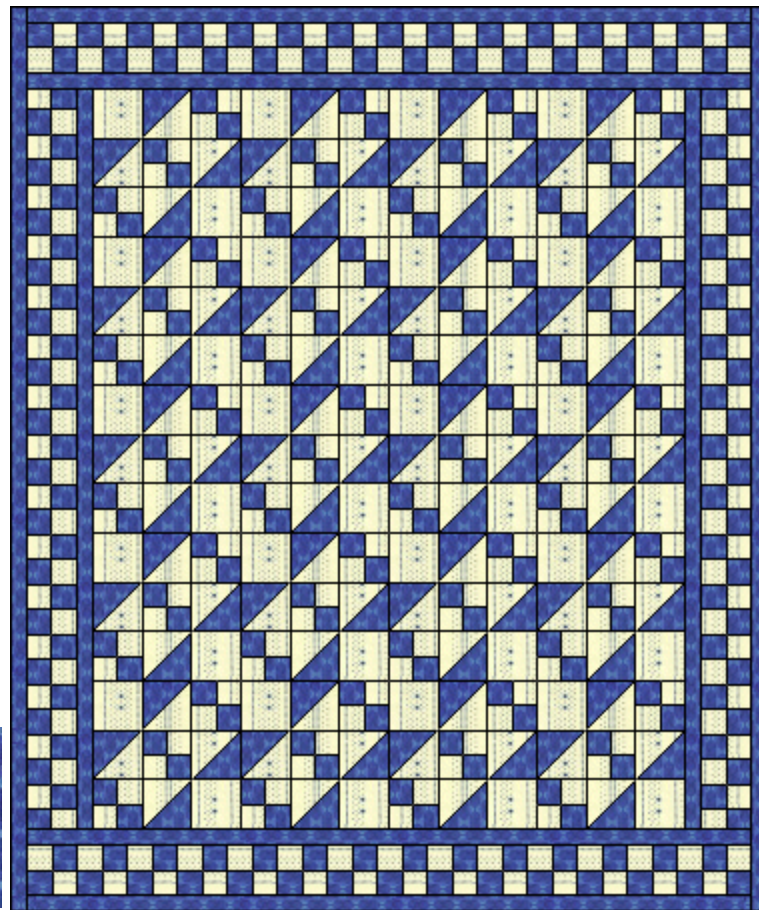
Now sew the Color 1 and Color 2 2-1/2" x 15" strips right sides together along one long edge, again using a scant 1/4" seam. Press the seam allowance towards the darker fabric. Mark and cut this at 2-1/2" intervals...



Next sew those little units we just made together into four patch squares. Make three units like this, pressing seams to one side...[on to Page 2!](#)



Then just piece the block, using the units we just made. Sew three rows of three units each, as shown at left, and then sew together the rows! Alternate pressing directions by row to keep seams nice and flat!



The quilt is four blocks by five, with a narrow Color 1 border, then a pieced checkerboard border, and another narrow Color 1 border!



** Supplies List **

Red medium print



Color 1 Color 1 needs: one 4-7/8" x 9-3/4" strip AND one 2-1/2" x 15" strip

White solid



Color 2 Color 2 needs: one 4-1/2" x 9" strip AND one 4-7/8" x 9-3/4" strip AND one 2-1/2" x 15" strip